



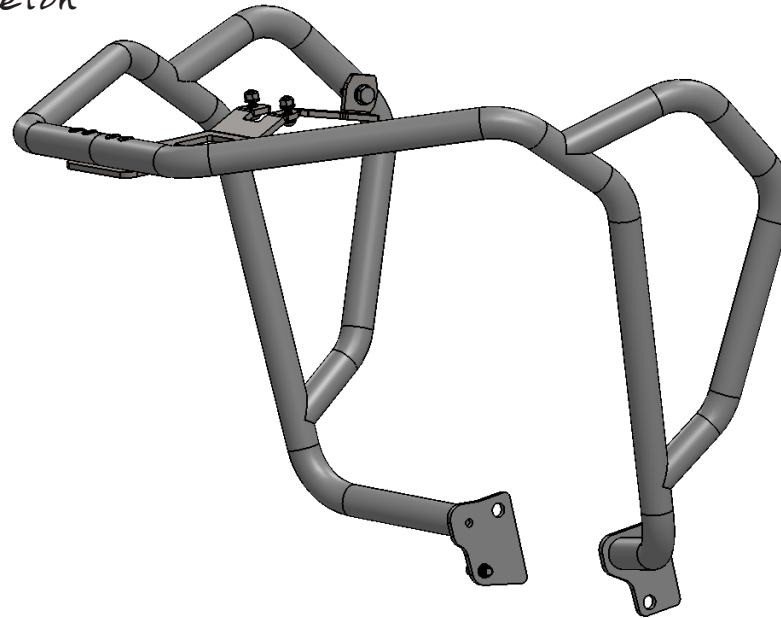
AltRider Upper Crash Bars for Honda Africa Twin CRF1000L INSTALLATION INSTRUCTIONS

The most up to date instructions can be downloaded from the product page at altrider.com, under the instructions tab.

Dear Rider,
Thank you for choosing AltRider! Whether a seasoned world adventurer or a first time ADV-Newbie, we welcome you to the AltRider experience. You can install your new product with the utmost confidence. AltRider designs, tests, and manufactures all of its products here in the United States. We are proud to do what we do, and honored to present to you the product of our labors.

Enjoy it, show it off, and most of all, RIDE IT!

Venture On,
Jeremy LeBreton



AltRider Upper Crash Bars
Honda Africa Twin CRF1000L
AT18-X-1001

Package Contents:
- Crash Bars
- Hardware Kit
- Instructions

AltRider LLC

Global

mailing: 4000 Aurora Ave N Ste 100
Seattle, WA 98103 USA
phone: 206-922-3618
email: info@altrider.com
web: www.altrider.com

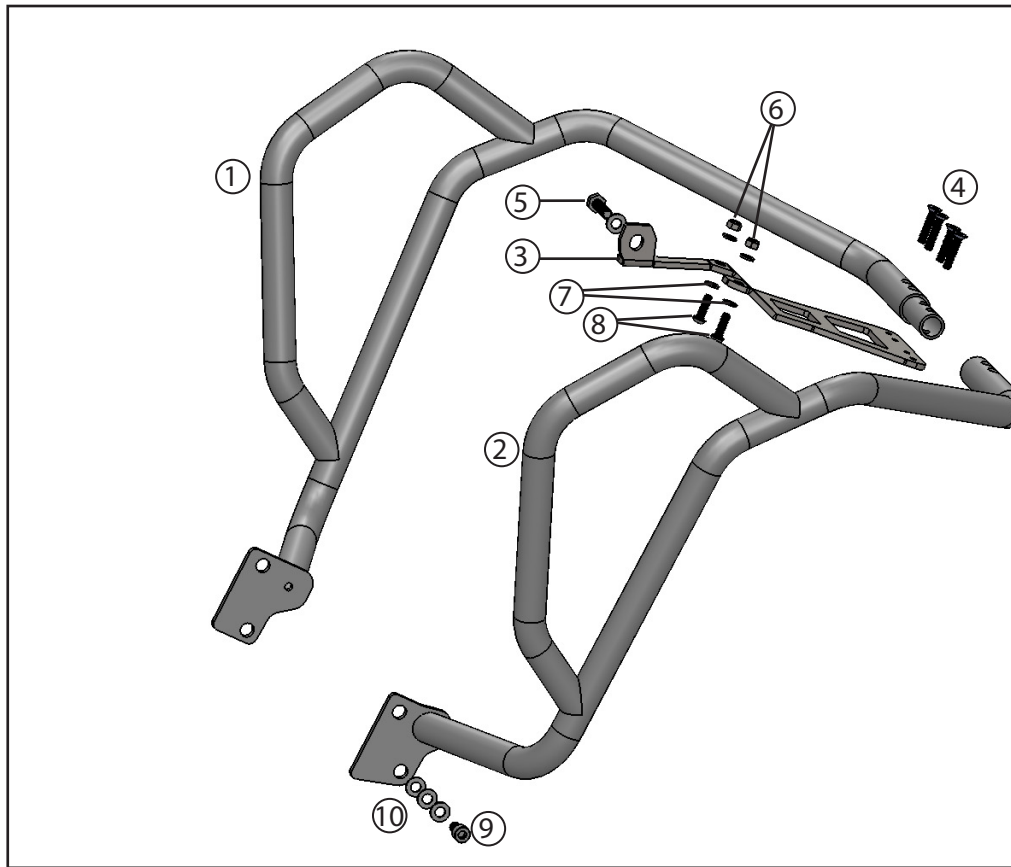
Europe

mailing: AltRider EU
Heliumstraat 230
2718 RS Zoetermeer
The Netherlands

email: info@altrider.eu

REV 17
MADE IN THE USA





Kit:

- ① Left bar
- ② Right bar
- ③ Under Nose Bracket
- ④ (qty 4) M6 x 30 flat head screw
- ⑤ M10 x 30 hex cap screw
- ⑥ (qty 2) M6 lock nut
- ⑦ (qty 4) M6 washer
- ⑧ (qty 2) M6 x 20 button head screw
- ⑨ M8 x 16 socket cap screw
- ⑩ (qty 4) M8 washer



Required Tools:

- ① 10mm spanner
- ② 8mm hex allen tool
- ③ 4mm hex allen tool
- ④ 13mm socket
- ⑤ 12mm socket
- ⑥ Extension
- ⑦ Ratchet
- ⑧ Thread locker





If installing on the Adventure Sports model

If you are installing any of the AltRider Crash Bar System the OEM light bar and skid plate must be removed.

Remove the OEM Light Bar and Skid Plate in addition to the brackets pictured. Once all of the brackets have been removed you can begin bracket install, see bracket install instructions.

- Ⓐ OEM Light Bar lower bracket
- Ⓑ OEM Light Bar upper bracket
- Ⓒ OEM Light Bar lower bracket extension (see note below)
- Ⓓ OEM Skid Plate Bracket



***NOTE: BRACKET (C) MUST BE REMOVED BEFORE STARTING INSTALLATION.**

Exhaust must be loosened to remove bracket C. See step 1 of Lower Crash Bar instructions to loosen exhaust header.

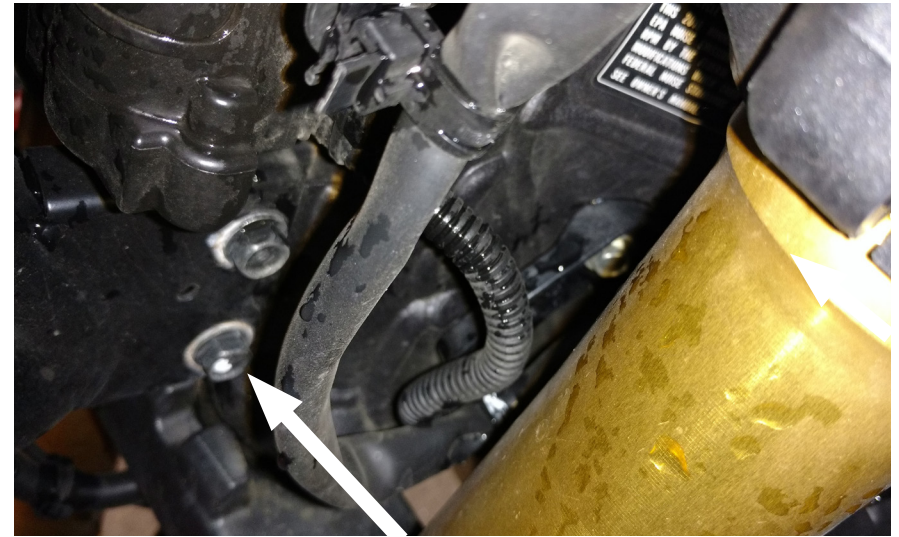
① **Adventure Sports Model:** First, remove brackets (C) on page 2. Follow instructions from the lower bars to loosen exhaust to allow removal.

A) Install the **Bracket Set AT16-9-1000** before installing either the lower or upper crash bars. Install to step 7 but leave the long M8 and M10 frame bolts loose for now.

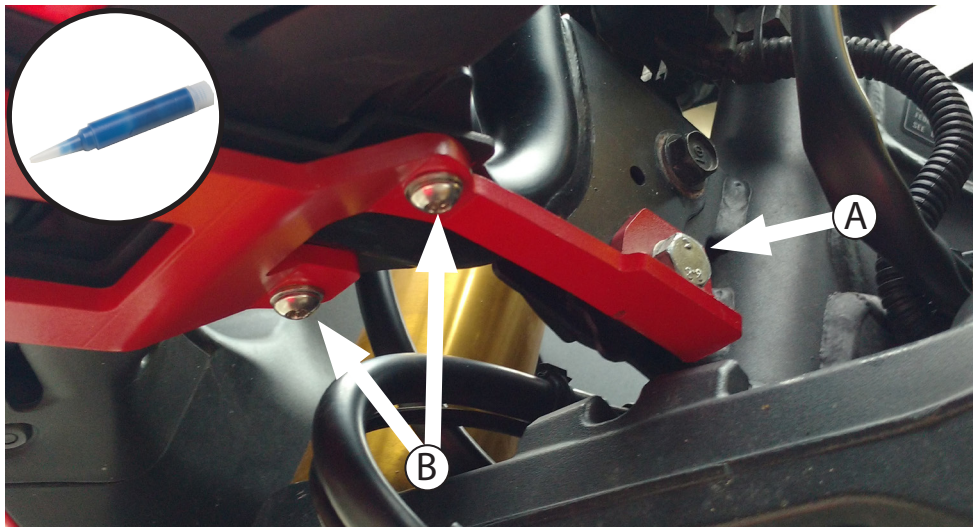
B) If you are installing the AltRider headlight guard at this time, skip step 4, leave the lower bracket holes empty for now.

C) If you already have the skid plate installed it can remain in place .

D) If you already have the Lower Crash Bars installed they can remain in place, but will need loosened.



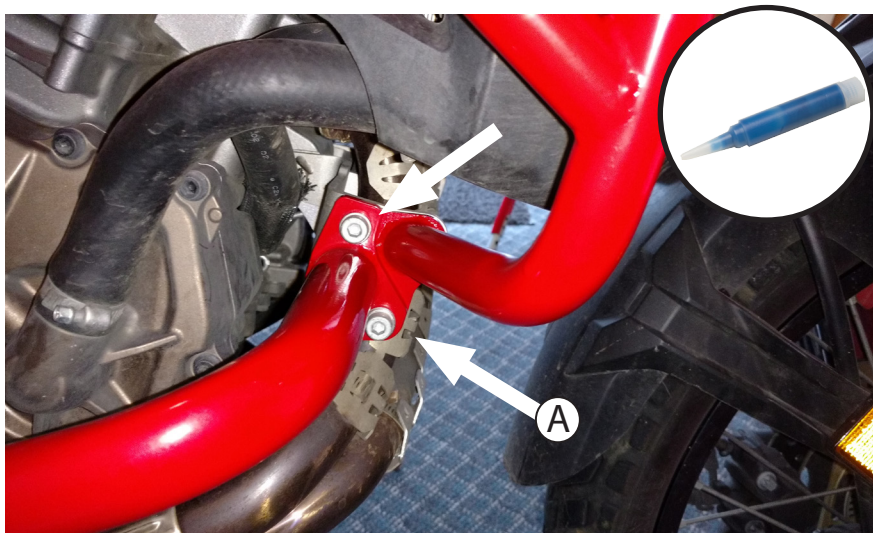
② Remove the lower of two M8 hex cap screw (12mm socket) that attaches the front fairing bracket to the bike frame at the head stock. You will not need this later.



③ Install the center upper bracket as shown. (A) Add a drop of loctite to the M8x30 hex cap screw with washer and use 13mm socket to screw loosely in place. (B) Insert the (qty 2) M6x 20 button head screws from below (with washers) and thread on M6 lock nuts and washers on top. Leave loose for now. (If you have the headlight guard installed, leave that bracket sandwiched on top of the new crash bar bracket).



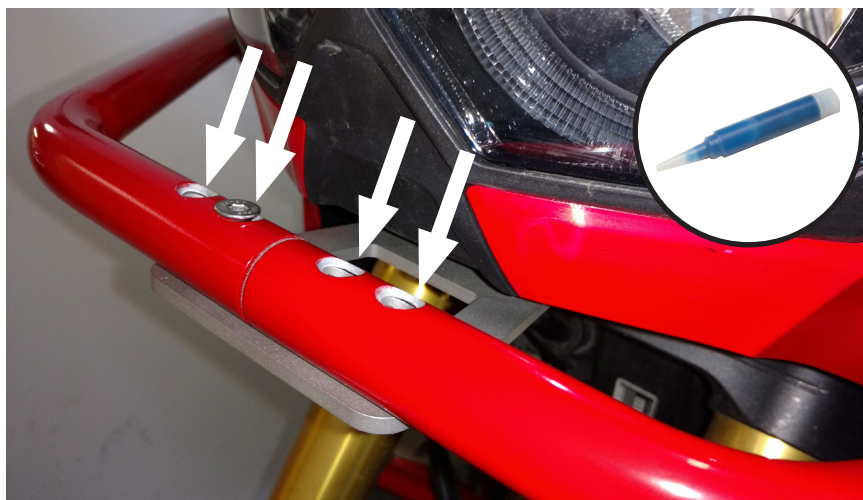
④ Slide the right and left side bars together at the center. Set them on top of the upper bracket and align the lower flanges. If you have AltRider Lower Crash Bars installed, place the upper flanges between the bracket set and lower bar flanges as shown.



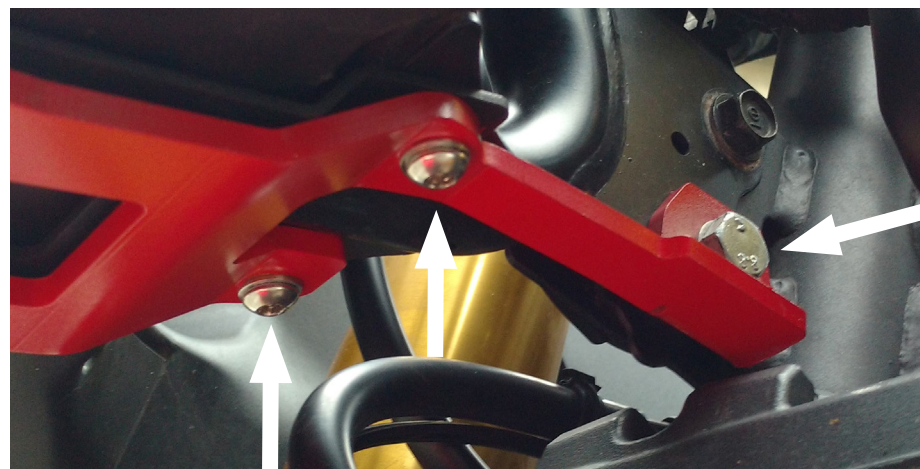
- ⑤ Add a drop of loctite to each M8 cap head screw. Insert M8 x 25mm long cap head screws to attach lower bars to the bracket set. In position (A) use the 18mm long screw with washers if you are mounting the upper bars only. If you have uppers and lowers use the 25mm long screw with 3 washers.



- ⑥ TIP! Use a screw driver or drift pin to help align all of the mount holes. This makes inserting the screws easier and helps prevent cross threading.



- ⑦ Add a drop of loctite to each M6 x 30 flat head screw and attach the bars to the upper bracket at the crossover. Tighten gradually, alternating between screws, until all are tight to 7Nm



- ⑧ Tighten the M6 button head screws at the center bracket. (4mm Allen and 10mm wrench) TIP! Once just snug, hold the button head screw stationary, and use a wrench to rotate and tighten the M6 lock nut. This will help preserve the tool interface in the button head. Make sure bars are positioned well. Tighten the M8 hex cap screw to 18Nm



- ⑨ Go to step 7 in the Bracket set instructions, complete tightening of the M8 and M10 frame bolts. Then tighten the M8 socket cap screws to 23Nm



- ⑩ Finish Lower crash bar installation, reinforcement bar installation, skid plate installation, or headlight guard installation. Once all installations are complete, go back and make sure all fasteners have been correctly tightened.

CONGRATULATIONS!

You've completed your installation. If at any point you have questions about your installation or have any feed back for us, we'd love to hear it. A downloadable version of these instructions can be found at our web site. www.AltRider.com

After 5 hours of riding, or 100 miles, check all the fasteners on the assembly to ensure they are tightened to spec.

Global Office:

email: info@AltRider.com
phone: +1 206-922-3618
address: 4000 Aurora Ave N
Ste 100
Seattle, WA 98103

Europe Office:

email: info@AltRider.eu
address: AltRider EU
Heliumstraat 230
2718 RS Zoetermeer
The Netherlands

TERMS OF USE, WARRANTY AND LIABILITY WAIVER

AltRider LLC, a Washington company, having its principal place of business in Seattle, WA ("AltRider") offers its motorcycle accessories (the "Product") with the terms, conditions and notices as follows:

Terms of Use

This Product is offered to you conditioned upon your acceptance without modification of the terms, conditions, and notices contained herein. Installation and/or use of this product implies acceptance of all such terms, conditions, and notices. If you do not agree to these terms, do not buy the Product. If you have already bought the Product and do not agree to these terms, return this Product promptly including the packaging and all written materials, to AltRider.

Limitation of Liability and Warranty Disclaimer

You may return your merchandise for a full refund or exchange, less any original or return shipping fees under these conditions:

1. Only if the merchandise is in 100% factory condition. Original manufacturer's packaging and same condition as sold – original boxes, packaging material, instructions, documentation, parts, and attached tags.
2. Only unused, unscratched, uninstalled, undamaged merchandise will be accepted. Do not install equipment until you are sure you want to keep it. Package items carefully in protective materials before returning them. Never ship an item in its original manufacturers packaging – it will arrive damaged. Please use a postal box or other adequate packaging to ensure your return or exchange is not damaged on the way back to AltRider.com.

To read more about our exchanges and returns policy, on the web, navigate to <http://www.alt rider.com/info/exchangesAndReturns>

Excepting the warranties stated in the preceding paragraph, AltRider hereby disclaims all other warranties and conditions with regard to the Product including all implied warranties and conditions of merchantability and fitness for a particular purpose. There are no warranties which extend beyond the description on the face hereof. AltRider does not warrant against damages or defects arising out of use or installation of the Product. Installation instructions are provided for your convenience. AltRider is not responsible for any damages arising out of the installation, improper or otherwise, of the Product. No warranty of any kind, expressed or implied, is made regarding the safety of this Product.

To the extent allowed by law, AltRider shall not be held liable for any direct, indirect, punitive, incidental, special or consequential damages arising out of, or connected with, the use or misuse of this Product. Buyer assumes all risks and liability arising from use of this Product.

Entire Agreement

This document states the entire obligation of AltRider with respect to the Product. If any part of this agreement is determined to be void, invalid, unenforceable or illegal, including, but not limited to the warranty disclaimers and liability limitations set forth above, then the remainder of the agreement shall remain in full force and effect.

Applicable Law

This agreement is governed by the laws of Washington, USA. You hereby consent to the exclusive jurisdiction and venue of the courts of Washington, USA, in all disputes arising out of or relating to the use of this product.

