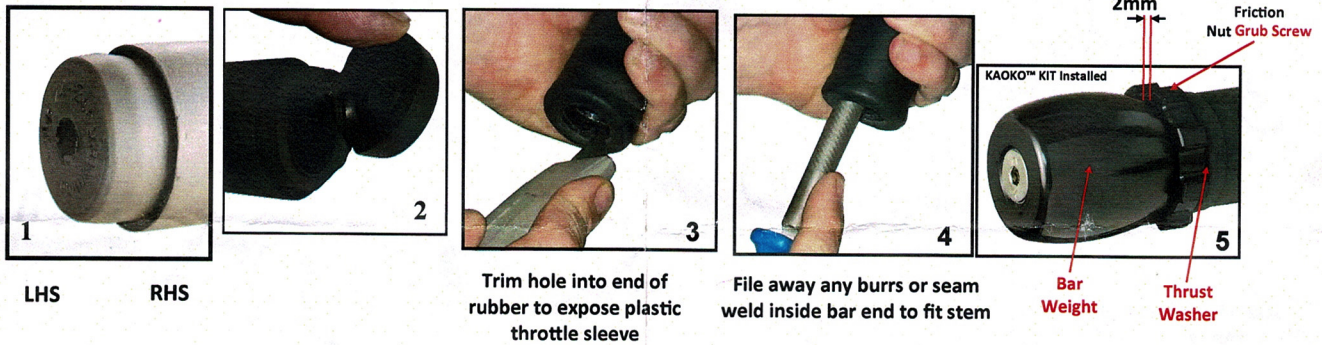




URAL : models from 1999 onwards

SABS DESIGN EXCELLENCE AWARDS 2009

RSA Registered Designs		Patents	
No. A2007/00202	No. A2007/00205	"U.S. Pat. No. US D593,462 S"	
No. A2007/00203	No. A2007/00206	"U.S. Pat. No. US D593,463 S"	
No. A2007/00204	No. A2007/00207	"U.S. Pat. No. US D593,464 S"	



DISCLAIMER: NO RESPONSIBILITY ACCEPTED FOR NON-ADHERENCE TO THESE INSTRUCTIONS

KAOKO™ Safety Warning:

See: www.kaoko.com for further information info@kaoko.com

The KAOKO™ Throttle Stabilizer is an aftermarket accessory. Any misunderstood, abused or incorrectly installed motorcycle accessory is a safety hazard that could cause injury or death. It's the rider's responsibility to understand the operation and purpose for which the KAOKO™ Throttle Stabilizer is designed, namely, for cruising, only when safe to do so. At all other times the control should be disengaged. The KAOKO™ Throttle Stabilizers are to be used only by experienced and responsible riders.

Note: Urals have inconsistencies on the inside diameter of the handle bars sometimes resulting in Kaoko fitment challenges. The URAL100 will fit models with a minimal Handlebar ID of 15.4mm up to 16mm without using any copper shim. Copper shims to wrap around the stems of the Kaoko end weights are provided in the kits for models with handlebar ID up to 17mm. Shim wrapping must be as neat fitting as possible. (It is recommended to add a very light smear of thread locking adhesive to both sides of the copper shim)

Note: Figure 5 is for illustration purposes only!

Fitting & Operating Instructions: Kit comprises of Left Hand Side (LHS) and Right Hand Side (RHS) Bar Weights incl. 2mm Allen key, thrust washers and fitting instructions

Step 1: See picture 1 of grip with the removable chromed end cap removed (No dismantling of throttle sleeves grips is necessary).

For grips with removable end caps, manually by force, pull off end caps and neatly trim rubber to expose the plastic throttle sleeve. Trim rubber grip so that the end is flush/in line with end of plastic sleeve. See picture 2. Hand file away any burrs or seam weld per picture 4

For grips with closed ends, neatly trim a hole in end of rubber grip to expose plastic throttle sleeve in same manner as above (Picture 3). Hand file away any burrs or seam weld in the handle bar tube per picture 4

Step 2: For grips trimmed per picture 2, place plastic washer (two identical supplied for each grip) onto end of the grip. The washers have a recess to fit onto the spigot of rubber end.

For grips similar to picture 3, use thrust washer 100 or 002C depending on best suitability.

Note: To enable improved functionality, it is recommended (not essential) to apply very light smear of Automotive grease or Petroleum jelly to the friction face of the thrust washer (See Figure 3 at the back of the page)

Step 3: Turn the Friction Nut so that there is a 2mm gap between the nut and the shoulder of the Bar Weight body (per picture 5). Then, with the thrust washer placed over the stem of Control, fully slide the Kaoko end weights into the open bar ends and firmly tighten central retaining screws. Thread locking adhesive is recommended on the M8 threads.

Step 4: Back off the Friction Nut against shoulder of the Bar Weight to disengage the Throttle Control.

Step 5: Set Friction Nut which has a M4 grub screw to the Note under Maintenance below.

Operation: The friction nut has a **left hand thread**. In readiness for engagement it must be adjusted so that it makes light contact with the throttle sleeve.

To Engage: While rolling on the throttle, the friction nut can be gripped between the small finger and palm of hand. This action tightens the nut and provides sufficient friction to set throttle to the desired opening.

(The friction is such that the rider may still open and close the throttle. The throttle simply has a slight rotational stiffness.)

To Disengage: While rolling off the throttle, grip friction nut between small finger and palm of hand.

VERY IMPORTANT!! The throttle should open and snap closed freely when correctly disengaged.

Maintenance: Periodically check that the central retaining screws are tight.

Note: The Grub Screw (see picture 5) is adjusted (2mm key) to provide the necessary rotational resistance of the friction nut. This may be adjusted periodically to take up wear. The nut should be slightly stiff turning. Every few years it may be necessary to remove RHS end weight and friction nut and fully brush clean threads with soapy water, apply petroleum jelly to threads and set grub screw as above.

(O-Ring cushion: 19.6 mm I.D. x 2.4 mm section — if replacement is required)

Indemnity: It is advised that the use of the Throttle Stabilizer is at the sole risk of the rider and by his/her decision to use it he/she does indemnify the manufacturers or organizers, their agents, employees and officers against any claim or action by themselves, their dependents or any other third party arising out of any loss, damage, injury or death suffered.

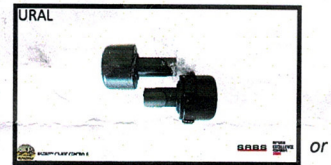


Figure 1: Typical KAOKO Throttle Stabilizer Components

rev: 03/03/2017

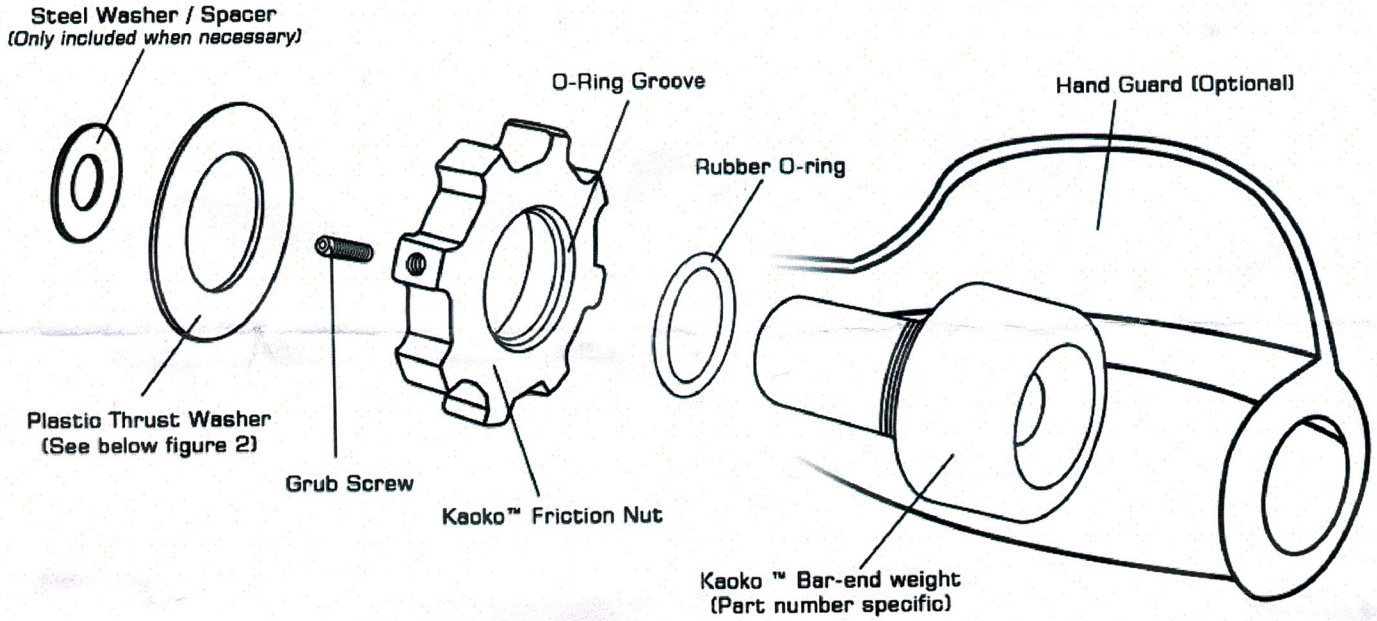


Figure 2: Thrust Washer Final Fitment

Note: The KAOKO™ Thrust Washer (ref: figure 1) must thrust against the plastic throttle sleeve (tube) indicated below in figure 2.

The KAOKO™ Thrust Washer must not thrust against the rubber throttle grip. Refer detailed instructions on reverse.

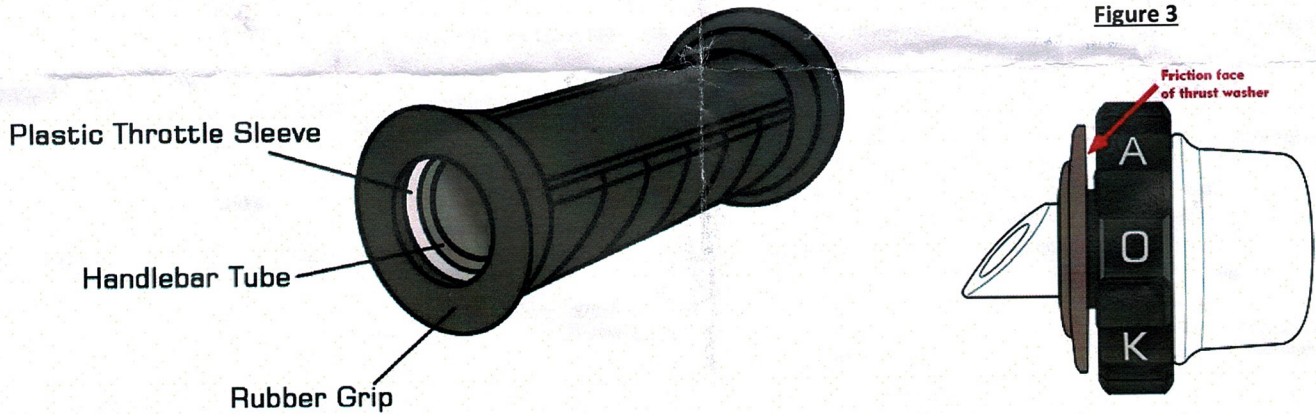


Figure 3

KAOKO™ ACCESSORIES AND PRODUCTS

Express Disclaimer, Exclusion of Liability, Indemnity and Safety Warning:

1. The accessories and products supplied by KAOKO™ are aftermarket accessories and products.
2. The use and employment of such accessories and products is at the sole risk and discretion of the user.
3. The user of such accessories and products further indemnifies KAOKO™ and its representatives against all claims and losses arising (including personal injuries, death, damage to property and any other losses) and involving such accessories and products.
4. KAOKO™ provides no warranty on accessories and products that it produces and distributes and does not aver that these accessories and products are fit for the purposes for which same are manufactured and intended.
5. KAOKO™ assumes no responsibility for and liability regarding any and all defects, deficiencies or otherwise in and attributed to its motor accessories and products.
6. KAOKO™ further assumes no responsibility for and liability regarding any prospective losses and claims for damages; be same actual, consequential or contingent and which in any way are associated with its motor accessories and products. In circumstances where accessories and products supplied are found to be of defective manufacture, KAOKO™ reserves its rights to replace such defective accessories and products, alternatively; effect a financial refund equivalent to the purchase price of such accessories and products as at the date of placement of order.
7. The application and affixing of KAOKO™ accessories and products to vehicles may necessitate or result in modifications being undertaken and this may result in manufacturer or otherwise warranties provided on such vehicles being affected and for that matter voided. In circumstances where the above occurs, KAOKO™ expressly denies being accountable regarding any liability and losses ensuing.
8. The application and affixing of KAOKO™ accessories and products may further result in usual vehicle operations and safety features being modified, overrode and for that matter discarded.
9. KAOKO™ accessories and products ought to be used by experienced and responsible riders only. The onus rests on the user of such KAOKO™ accessories and products to become properly familiarised with and understand the nature, operation and scope of the above accessories and products and further ensure that same are correctly affixed and used at all times and further not abused.
10. **Misapplication and abuse of such accessories and products can endanger the user and result in injury or death and further constitute safety hazards.**
11. The affixing and usage advices provided by KAOKO™ are for guidance purposes only and do not constitute specific fitment instructions. The onus rests on the user to ascertain and ensure proper and professional affixing and fitting to vehicles of the accessories and products and in seeking suitably qualified assistance in dealing with the above.
12. Prior to resorting to using KAOKO™ accessories and products, it is recommended that the user seek independent advice regarding the integrity and suitability of above accessories and products and in fulfilling the user's needs.
13. KAOKO™ accessories and products should only be fitted to new motorcycles and those that are in original condition, having not been involved in any accidents, being dropped, damaged or the subject of repair. Where KAOKO™ accessories and products are fitted to motorcycles not in original condition there is the risk that the operation of KAOKO™ accessories and products will be compromised and damaged. **In all of the above events, KAOKO™ does not accept liability**