

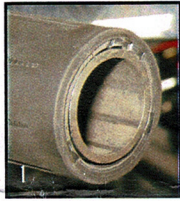


**KAOKO™ CRUISE CONTROL KITS:**  
**SUZBBCV08, HDTCV08-0.8, YAMWAR, YAMWARSNUB**  
**For VICTORY (2008–current models) &**  
**YAMAHA XVS650 & warrior**

**SABS** DESIGN EXCELLENCE AWARDS 2009

Patents  
 "U.S. Pat. No. US D593,462 S"  
 "U.S. Pat. No. US D593,463 S"  
 "U.S. Pat. No. US D593,464 S"

RSA Registered Designs  
 No. A2007/00202 No. A2007/00205  
 No. A2007/00203 No. A2007/00206  
 No. A2007/00204 No. A2007/00207

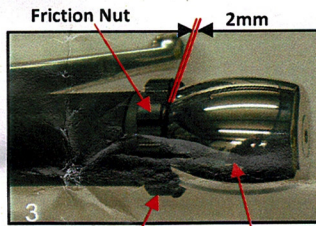
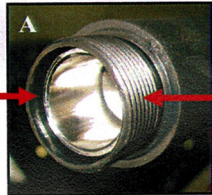


**Bar End Cap Removed**

**For Yamaha Warrior and XVS650 Models:**  
 trim the plastic thread on the end of the throttle sleeve by approx. 4mm making it flush with end of handle bar tube

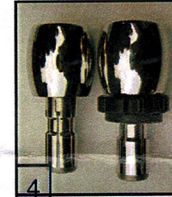


**Thrust Washer—recess Facing Throttle Sleeve**

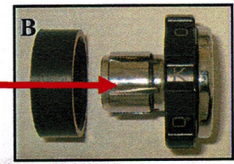


**KAOKO™ Cruise Control Assembly**

The supplied black thrust washer will pass over the remaining thread.



**Kit comprises: LHS & RHS weights**



**YAMWARSNUB**

**KAOKO Kit Comprises of:**  
 End Weight,  
 Friction Nut,  
 Thrust Washer,  
 2mm Allen key,  
 Fitting Instructions

**DISCLAIMER: NO RESPONSIBILITY ACCEPTED FOR NON-ADHERENCE TO THESE INSTRUCTIONS**

**KAOKO™ Safety Warning:**

See: [www.kaoko.com](http://www.kaoko.com) for further information [info@kaoko.com](mailto:info@kaoko.com)

The KAOKO™ Cruise Control is an aftermarket accessory. Any misunderstood, abused or incorrectly installed motorcycle accessory is a safety hazard that could cause injury or death. It's the rider's responsibility to understand the operation and purpose for which the KAOKO™ Cruise Control is designed, namely, for cruising, only when safe to do so. At all other times the control should be disengaged. The KAOKO™ Cruise Controls are to be used only by experienced and responsible riders.

**Note:** An adjustment to throttle assembly position may be necessary to suit KAOKO™ Cruise Controls. The throttle assembly position on aftermarket bars, and some OEM bars, is adjustable. The assembly can marginally be re-positioned along the handle bars slightly loosening the throttle assembly clamp screws, and then sliding the throttle assembly along the handle bars (left or right). Once done, firmly tighten the clamp screws to OEM torque specifications. This adjustment is generally not necessary.

**Fitting & Operating Instructions:**

**Step 1:** **For Yamaha Warrior and XVS650 models:** Remove the Chromed end cap from your throttle sleeve, trim the plastic thread on the end of the throttle sleeve by approx. 4mm bringing it flush with the end of the handle bar tube. The supplied black thrust washer will pass over the remaining thread. See picture A above.

**Step 1:** **For Victory Models:** Completely remove right hand side (RHS) and left hand side (LHS) end caps as shown in picture 1. The caps are plastic "knock in" and can be gently prized out of the handle bar using a pair of opposing flat screw drivers as levers.

**Step 2:** **For Right Hand Side Kit Assembly,** place the plastic thrust washer onto the stem of the KAOKO™ Control as shown in Picture 2 and slide the control into the end of handle bar. Ensure the recess on the one side of the thrust washer faces the end of the throttle sleeve.

**Step 3:** Turn the friction nut so that there is a 2mm gap between the nut and the shoulder of the bar weight (see picture 3) and fully slide the RHS Kit in to the end of the handle bar then tighten the central retaining screw to 20lb.ft or 26Nm. **IMPORTANT - It is recommended that you use a Quality 5mm Allen socket and torque wrench.** The 5mm key included in the kit is only to add to the bikes tool kit in the event that the bar weight should become loose on a ride. This should never occur if the kit is tightened as described above.

**Step 4:** Back off the friction nut against the body of the bar weight to disengage the Throttle Control.

**Step 5:** Set friction nut to the desired resistance by gently tightening the grub screw with 2mm Allen key. The friction nut should be stiff turning. See Picture 3.

**Step 6:** **For Left Hand Side Kit Assembly,** fully slide the kit into handle bar. See picture 4. Firmly tighten central retaining screw as per step 3.

**Note:** For product YAMWARSNUB; no assembly on the left hand side is necessary. Follow fitting instructions above for RHS (Throttle Side) only.

**Operation:** The friction nut has a **left hand thread**. In readiness for engagement, it must be adjusted so that it makes light contact with the thrust washer.

**To Engage:** While rolling on the throttle, the friction nut can be gripped between the small finger and palm of hand. This action tightens the nut and provides sufficient friction to set throttle to the desired opening.

*(The friction is such that the rider may still open and close the throttle. It simply has a slight rotational stiffness.)*

**To Disengage:** While rolling off the throttle, grip friction nut between small finger and palm of hand.

**VERY IMPORTANT!! The Throttle should open and snap closed freely when correctly disengaged.**

**Note:** The Grub Screw is set to provide the necessary resistance on the thread of friction nut. This may be adjusted periodically to take up wear. (2mm Allen key)

**Maintenance:** Wash with soapy water regularly (no acid based cleaning materials) and apply silicone based car polish to chromed surfaces. Check tightness of central retaining screws. Adjust grub screw to desired operating resistance.

*(O-Ring cushion: 19.6mm I.D. x 2.4mm section — if replacement is required)*

**Indemnity:**

It is advised that the use of the cruise control is at the sole risk of the rider and by his/her decision to use it he/she does indemnify the manufacturers or organizers, their agents, employees and officers against any claim or action by themselves, their dependants or any other third party arising out of any loss, damage, injury or death suffered.



## KAOKO™ ACCESSORIES AND PRODUCTS

### **Express Disclaimer, Exclusion of Liability, Indemnity and Safety Warning:**

1. The accessories and products supplied by KAOKO™ are aftermarket accessories and products.
2. The use and employment of such accessories and products is at the sole risk and discretion of the user.
3. The user of such accessories and products further indemnifies KAOKO™ and its representatives against all claims and losses arising (including personal injuries, death, damage to property and any other losses) and involving such accessories and products.
4. KAOKO™ provides no warranty on accessories and products that it produces and distributes and does not aver that these accessories and products are fit for the purposes for which same are manufactured and intended.
5. KAOKO™ assumes **no** responsibility for and liability regarding any and all defects, deficiencies or otherwise in and attributed to its motor accessories and products.
6. KAOKO™ further assumes **no** responsibility for and liability regarding any prospective losses and claims for damages; be same actual, consequential or contingent and which in any way are associated with its motor accessories and products. In circumstances where accessories and products supplied are found to be of defective manufacture, KAOKO™ reserves its rights to replace such defective accessories and products, alternatively; effect a financial refund equivalent to the purchase price of such accessories and products as at the date of placement of order.
7. The application and affixing of KAOKO™ accessories and products to vehicles may necessitate or result in modifications being undertaken and this may result in manufacturer or otherwise warranties provided on such vehicles being affected and for that matter **voided**. In circumstances where the above occurs, KAOKO™ expressly denies being accountable regarding any liability and losses ensuing.
8. The application and affixing of KAOKO™ accessories and products may further result in usual vehicle operations and safety features being modified, ~~override and for that matter discarded.~~
9. KAOKO™ accessories and products ought to be used by experienced and responsible riders only. The onus rests on the **user** of such KAOKO™ accessories and products to become properly familiarised with and understand the nature, operation and scope of the above accessories and products and further ensure that same are correctly affixed and used at all times and further not abused.
10. **Misapplication and abuse of such accessories and products can endanger the user and result in injury or death and further constitute safety hazards.**
11. The affixing and usage **advices** provided by KAOKO™ are for guidance purposes only and do not constitute specific fitment instructions. The onus rests on the **user** to ascertain and ensure proper and professional affixing and fitting to vehicles of the accessories and products and in seeking suitably qualified assistance in dealing with the above.
12. Prior to resorting to using KAOKO™ accessories and products, it is recommended that the user seek independent advice regarding the integrity and suitability of above accessories and products and in fulfilling the user's needs.
13. KAOKO™ accessories and products should only be fitted to new motorcycles and those that are in original condition, having not been involved in any accidents, being dropped, damaged or the subject of repair. Where KAOKO™ accessories and products are fitted to motorcycles not in original condition there is the risk that the operation of KAOKO™ accessories and products will be compromised and damaged. In all of the above events, KAOKO™ does not accept liability.